

- One-piece compact design
- Bronze graphite-plugged bushing
- Easily replaces lower quality retainers
- Better handling of side load
- Now available in five diameters



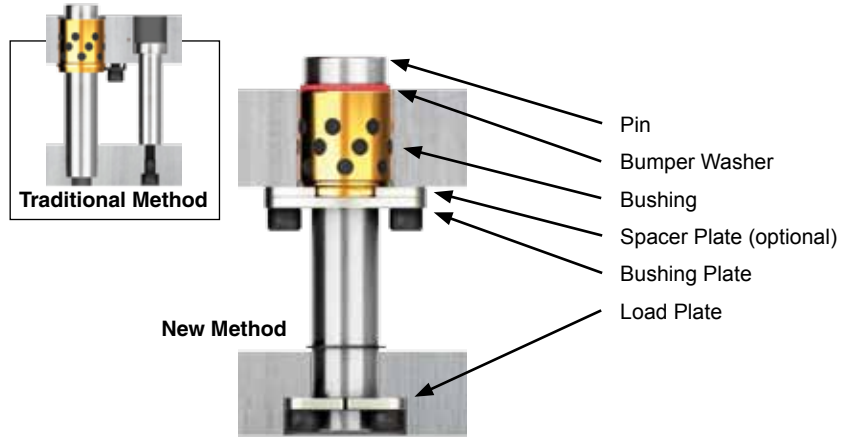
# Guided Retainers

SUPERIOR GUIDANCE & RETENTION

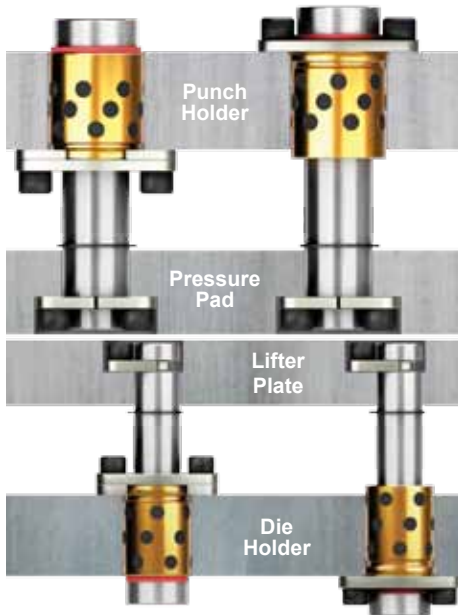
# Lamina Guided Retainers

Lamina Guided Retainers are precision guide pin & bushing/retainer assemblies that occupy much less space in the die than traditional pin and retainer combinations.

Guide and retain the pad or stripper plate in progressive stamping dies, or use on stock rails and stock dies with a lifter plate. Lamina Guided Retainers reduce machining cost and save space within your die.



## Versatile Mounting



Lamina's advanced design offers the following features:

### Tight Assembly Tolerances

- Superior guiding, with the same assembly clearance as traditional pins and bushings
- Greater positional accuracy

### Strength at the Pad

- Accomplished with steel load plates
- No SHCS threaded into the pin

### Strength at the Pin Head

- Unique one piece construction

### Bronze Graphite-Plugged Bushing

- Longer life
- Self lubricating
- No galling

**Greater Shear Load** capabilities from axial loads and side loads due to pin engagement in pad and hardened steel load plates.

### Optional Mounting of Bushing

- Can be mounted on either side of the plate for additional clearance, solving design issues
- Greater strength

Lamina Guided Retainers are available in 5 pin diameters, ranging in 1/8 inch increment lengths from 3.50 to 16.00 inches. Two bushing lengths are offered for each pin diameter.

\*U.S. Patent No. 11,504,759  
International Patents Pending

To configure and download CAD data:

[daytonlamina.com/guided-retainers](http://daytonlamina.com/guided-retainers)

## Application Recommendations

This table is for reference only. Design considerations should be based on your own calculations.

Table is based on average speed of around 25-35 SPM.

At least three units should be used, and they should be equally spaced and not in line.

If there is excessive side load on the pad, heel blocks should be added.

| Pin Dia. | Product Code | Travel (in) | Pad Weight (lbs) per Unit |
|----------|--------------|-------------|---------------------------|
| 1.00     | LGA_100      | < 2         | 22                        |
|          |              | 2 - 3       | 19                        |
|          |              | > 3         | 15                        |
| 1.25     | LGA_125      | < 2.5       | 50                        |
|          |              | 2.5 - 3.75  | 44                        |
|          |              | > 3.75      | 33                        |
| 1.50     | LGA_150      | < 3         | 71                        |
|          |              | 3 - 4.5     | 62                        |
|          |              | > 4.5       | 47                        |
| 1.75     | LGA_175      | < 3.5       | 111                       |
|          |              | 3.5 - 5.25  | 97                        |
|          |              | > 5.25      | 73                        |
| 2.00     | LGA_200      | < 4         | 186                       |
|          |              | 4 - 6       | 162                       |
|          |              | > 6         | 122                       |

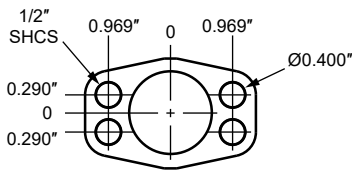
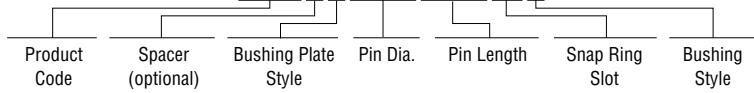
# LGA\_\_100 — Guided Retainer with 1.00 Inch Dia. Pin

## How to Order

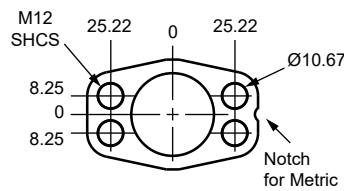
- Optionally choose a spacer plate (S) for retrofitting an existing tool.
- Choose a metric (M) or English inch (E) mount bushing plate.
- Choose a pin length from 3.50 to 16.00 in 1/8 inch increments.
- Use the table below to choose the snap ring slot number.
- Choose a short (S) or long (L) bushing.
- Two load plates are included, hardened to 28-34 HRc.
- Socket Head Cap Screws not included.

## Example Part Callout

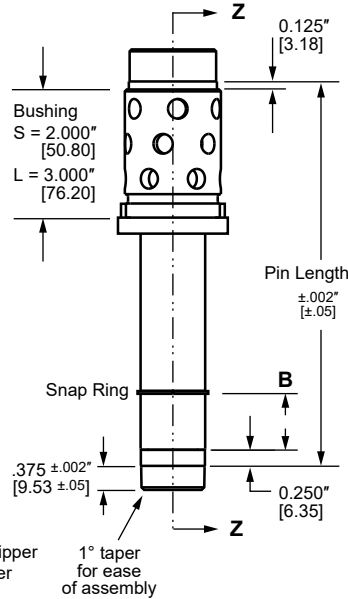
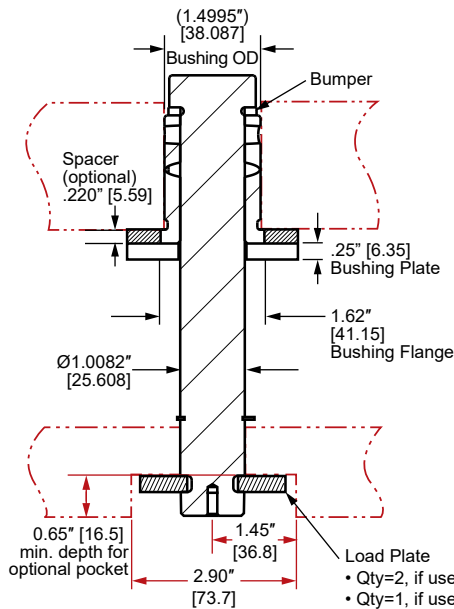
### LGASE100-575-3-S



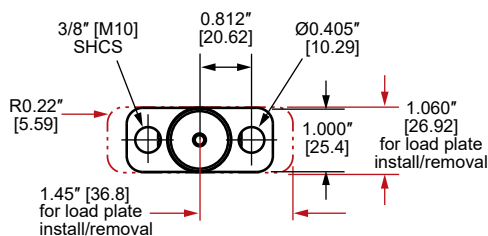
**INCH MOUNT BUSHING PLATE**



**METRIC MOUNT BUSHING PLATE**



## SECTION Z-Z



## Snap Ring Positions

| B    | Slot |
|------|------|
| .50  | 1    |
| .75  | 2    |
| 1.00 | 3    |
| 1.25 | 4    |
| 1.50 | 5    |
| 2.00 | 6    |

## Bore Sizes

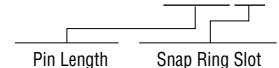
|         |                                |
|---------|--------------------------------|
| Pin     | 1.009 - 1.010" [25.63 - 25.65] |
| Bushing | 1.500 - 1.501" [38.10 - 38.12] |

## Replacement Parts

| Part #         | Description                  |
|----------------|------------------------------|
| LGS-100        | Spacer Plate                 |
| LGSR-100       | Snap Ring                    |
| LGR-100        | Load Plate                   |
| LGD-100        | Bumper Washer                |
| LGBPE-100      | Bushing Plate, English Mount |
| LGBPM-100      | Bushing Plate, Metric Mount  |
| LGB100-S       | Bushing, 2.000" Length       |
| LGB100-L       | Bushing, 3.000" Length       |
| LGP-100-xxx-x* | Pin                          |

\*Example Pin Replacement Callout

### LGP-100-575-5



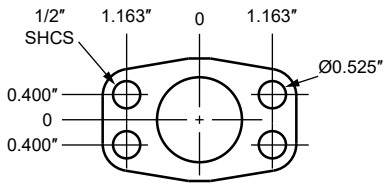
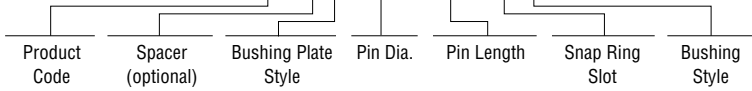
# LGA\_\_125 — Guided Retainer with 1.25 Inch Dia. Pin

## How to Order

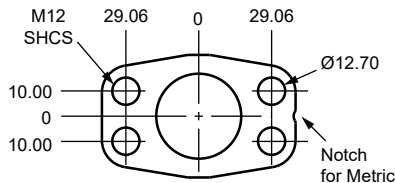
- Optionally choose a spacer plate (S) for retrofitting an existing tool.
- Choose a metric (M) or English inch (E) mount bushing plate.
- Choose a pin length from 3.75 to 16.00 in 1/8 inch increments.
- Use the table below to choose the snap ring slot number.
- Choose a short (S) or long (L) bushing.
- Two load plates are included, hardened to 28-34 HRc.
- Socket Head Cap Screws not included.

## Example Part Callout

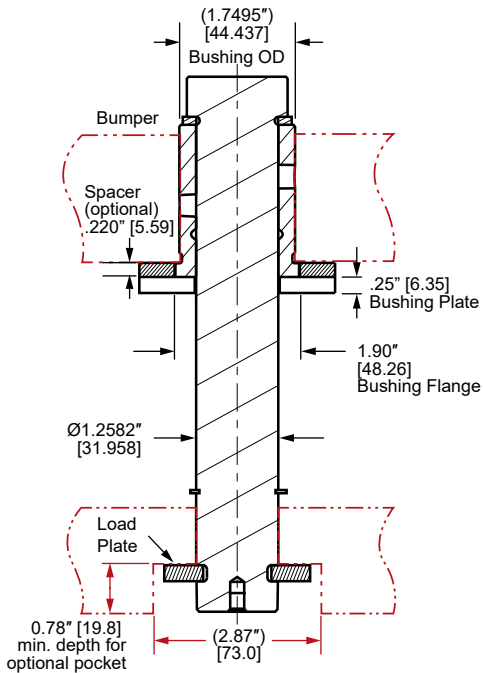
**LGASM125-575-5-L**



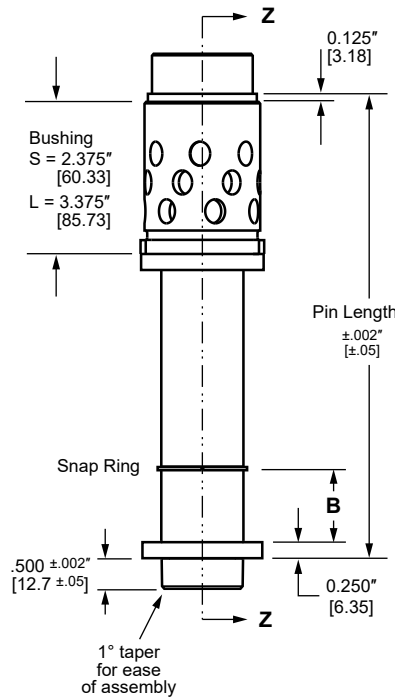
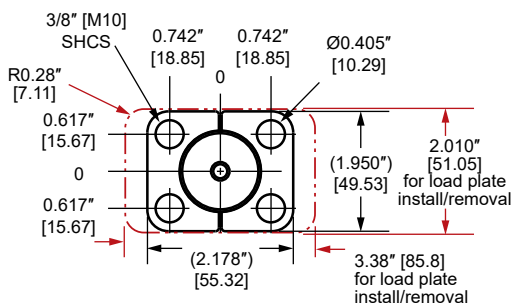
**INCH MOUNT BUSHING PLATE**



**METRIC MOUNT BUSHING PLATE**



**SECTION Z-Z**



## Snap Ring Positions

| B    | Slot |
|------|------|
| .50  | 1    |
| .75  | 2    |
| 1.00 | 3    |
| 1.25 | 4    |
| 1.50 | 5    |
| 2.00 | 6    |

## Bore Sizes

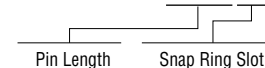
|         |                                |
|---------|--------------------------------|
| Pin     | 1.259 - 1.260" [31.98 - 32.00] |
| Bushing | 1.750 - 1.751" [44.45 - 44.47] |

## Replacement Parts

| Part #         | Description                  |
|----------------|------------------------------|
| LGS-125        | Spacer Plate                 |
| LGSR-125       | Snap Ring                    |
| LGR-125        | Load Plate                   |
| LGD-125        | Bumper Washer                |
| LGBPE-125      | Bushing Plate, English Mount |
| LGBPM-125      | Bushing Plate, Metric Mount  |
| LGB125-S       | Bushing, 2.375" Length       |
| LGB125-L       | Bushing, 3.375" Length       |
| LGP-125-xxx-x* | Pin                          |

\*Example Pin Replacement Callout

**LGP-125-575-5**



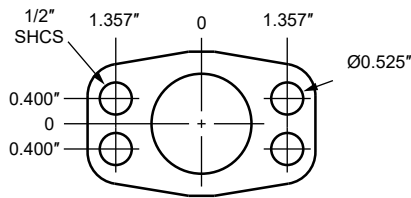
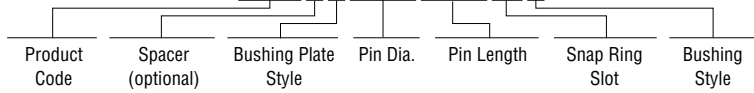
# LGA\_\_150 — Guided Retainer with 1.50 Inch Dia. Pin

## How to Order

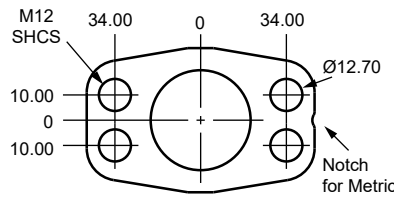
- Optionally choose a spacer plate (S) for retrofitting an existing tool.
- Choose a metric (M) or English inch (E) mount bushing plate.
- Choose a pin length from 3.75 to 16.00 in 1/8 inch increments.
- Use the table below to choose the snap ring slot number.
- Choose a short (S) or long (L) bushing.
- Two load plates are included, hardened to 28-34 HRc.
- Socket Head Cap Screws not included.

## Example Part Callout

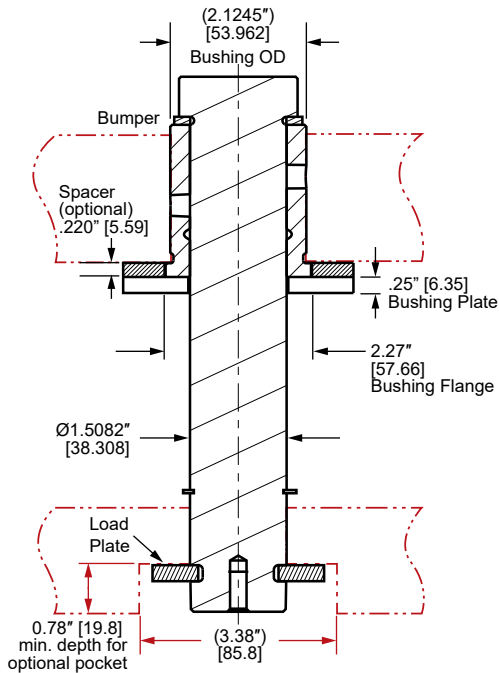
### LGASM150-575-5-L



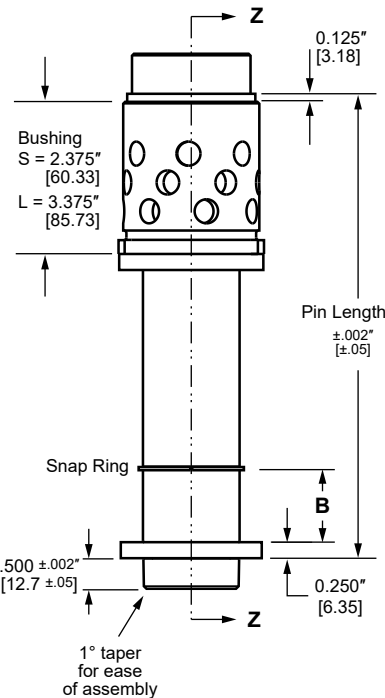
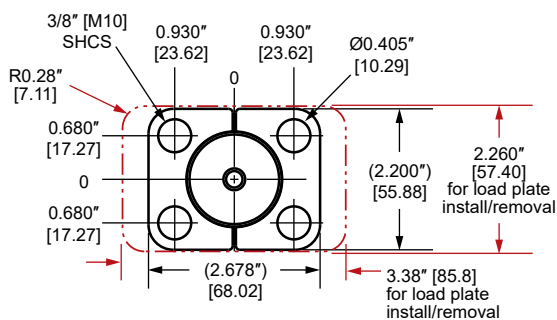
**INCH MOUNT BUSHING PLATE**



**METRIC MOUNT BUSHING PLATE**



## SECTION Z-Z



## Snap Ring Positions

| B    | Slot |
|------|------|
| .50  | 1    |
| .75  | 2    |
| 1.00 | 3    |
| 1.25 | 4    |
| 1.50 | 5    |
| 2.00 | 6    |

## Bore Sizes

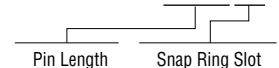
|         |                                |
|---------|--------------------------------|
| Pin     | 1.509 - 1.510" [38.33 - 38.35] |
| Bushing | 2.125 - 2.126" [53.98 - 54.00] |

## Replacement Parts

| Part #         | Description                  |
|----------------|------------------------------|
| LGS-150        | Spacer Plate                 |
| LGSR-150       | Snap Ring                    |
| LGR-150        | Load Plate                   |
| LGD-150        | Bumper Washer                |
| LGBPE-150      | Bushing Plate, English Mount |
| LGBPM-150      | Bushing Plate, Metric Mount  |
| LGB150-S       | Bushing, 2.375" Length       |
| LGB150-L       | Bushing, 3.375" Length       |
| LGP-150-xxx-x* | Pin                          |

\*Example Pin Replacement Callout

### LGP-150-575-5



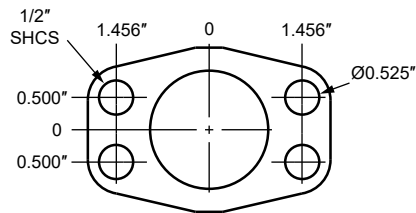
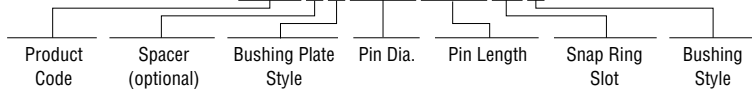
# LGA\_\_175 — Guided Retainer with 1.75 Inch Dia. Pin

## How to Order

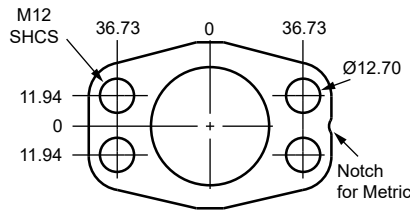
- Optionally choose a spacer plate (S) for retrofitting an existing tool.
- Choose a metric (M) or English inch (E) mount bushing plate.
- Choose a pin length from 3.75 to 16.00 in 1/8 inch increments.
- Use the table below to choose the snap ring slot number.
- Choose a short (S) or long (L) bushing.
- Two load plates are included, hardened to 28-34 HRC.
- Socket Head Cap Screws not included.

## Example Part Callout

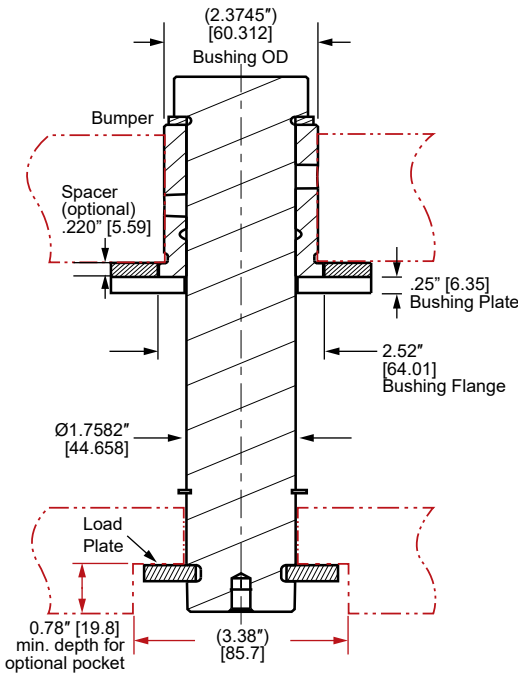
**LGASM175-575-5-L**



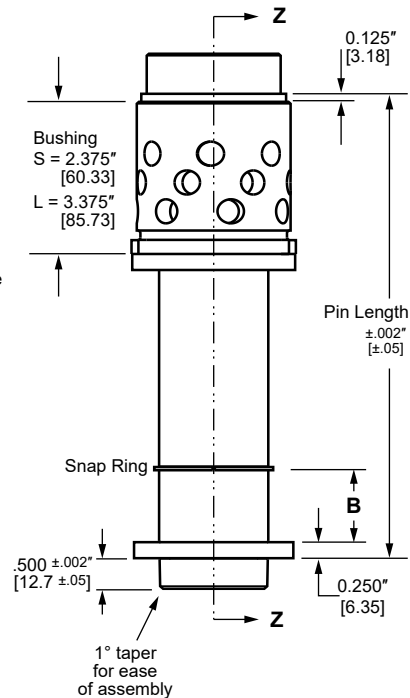
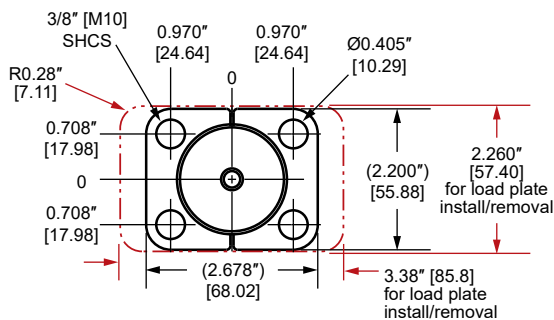
**INCH MOUNT BUSHING PLATE**



**METRIC MOUNT BUSHING PLATE**



### SECTION Z-Z



## Snap Ring Positions

| B    | Slot |
|------|------|
| .50  | 1    |
| .75  | 2    |
| 1.00 | 3    |
| 1.25 | 4    |
| 1.50 | 5    |
| 2.00 | 6    |

## Bore Sizes

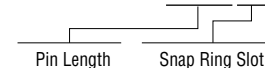
| Pin     | 1.759 - 1.760" [44.68 - 44.70] |
|---------|--------------------------------|
| Bushing | 2.375 - 2.376" [60.33 - 60.35] |

## Replacement Parts

| Part #         | Description                  |
|----------------|------------------------------|
| LGS-175        | Spacer Plate                 |
| LGR-175        | Snap Ring                    |
| LGB-175        | Load Plate                   |
| LGD-175        | Bumper Washer                |
| LGBPE-175      | Bushing Plate, English Mount |
| LGBPM-175      | Bushing Plate, Metric Mount  |
| LGB175-S       | Bushing, 2.375" Length       |
| LGB175-L       | Bushing, 3.375" Length       |
| LGP-175-xxx-x* | Pin                          |

\*Example Pin Replacement Callout

**LGP-175-575-5**



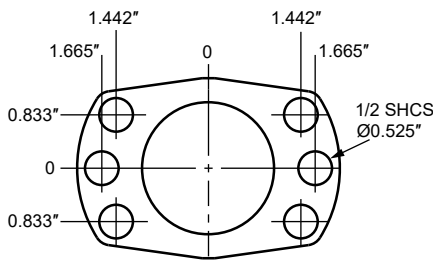
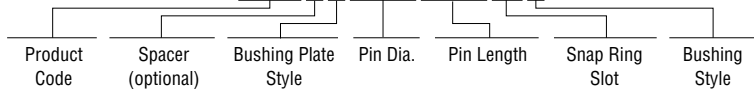
# LGA\_200 — Guided Retainer with 2.00 Inch Dia. Pin

## How to Order

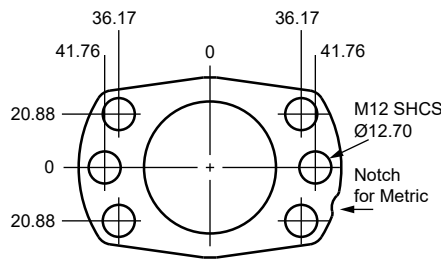
- Optionally choose a spacer plate (S) for retrofitting an existing tool.
- Choose a metric (M) or English inch (E) mount bushing plate.
- Choose a pin length from 5.00 to 16.00 in 1/8 inch increments.
- Use the table below to choose the snap ring slot number.
- Choose a short (S) or long (L) bushing.
- Two load plates are included, hardened to 28-34 HRC.
- Socket Head Cap Screws not included.

## Example Part Callout

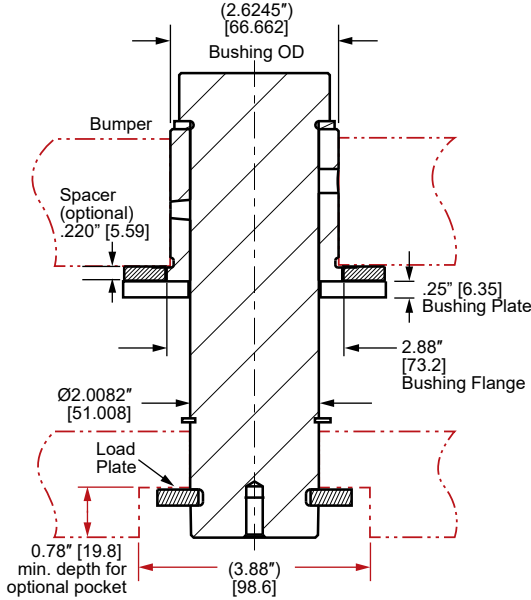
### LGASE200-875-5-S



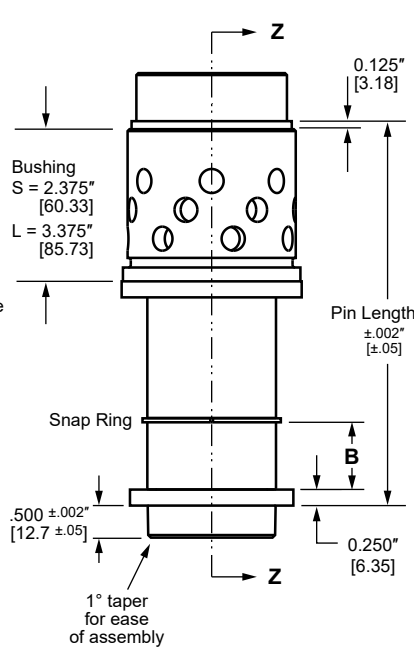
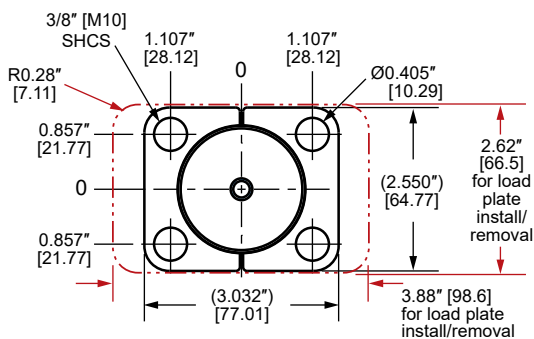
**INCH MOUNT BUSHING PLATE**



**METRIC MOUNT BUSHING PLATE**



### SECTION Z-Z



## Snap Ring Positions

| B    | Slot |
|------|------|
| .50  | 1    |
| .75  | 2    |
| 1.00 | 3    |
| 1.25 | 4    |
| 1.50 | 5    |
| 2.00 | 6    |

## Bore Sizes

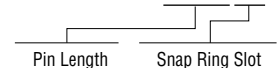
|         |                                |
|---------|--------------------------------|
| Pin     | 2.009 - 2.010" [51.03 - 51.05] |
| Bushing | 2.625 - 2.626" [66.68 - 66.70] |

## Replacement Parts

| Part #         | Description                  |
|----------------|------------------------------|
| LGS-200        | Spacer Plate                 |
| LGSR-200       | Snap Ring                    |
| LGR-200        | Load Plate                   |
| LGD-200        | Bumper Washer                |
| LGBPE-200      | Bushing Plate, English Mount |
| LGBPM-200      | Bushing Plate, Metric Mount  |
| LGB200-S       | Bushing, 2.375" Length       |
| LGB200-L       | Bushing, 3.375" Length       |
| LGP-200-xxx-x* | Pin                          |

\*Example Pin Replacement Callout

### LGP-200-875-5



## Commitment to Quality & Customer Satisfaction

*Dayton Lamina is a leading manufacturer of tool, die and mold components for the metal-working and plastics industries. As a customer-focused, world-class supplier of choice, we provide the brands, product breadth, distribution network and technical support for all your metal forming needs.*

*Our goal is to give our customers the most innovative and value-added products and services.*



# DAYTON Lamina™



\*Dayton Lamina's line of Danly products is available only to North America.

[www.daytonlamina.com](http://www.daytonlamina.com)