

**BRHT™**  
**B**ALL-LOCK  
**R**ETAINER  
**H**EAVY-DUTY  
**T**RU-LOCK

PAGE SR1

**TRU&LOCK®**

**BRHR™**  
**B**ALL-LOCK  
**R**ETAINER  
**H**EAVY-DUTY  
**R**OUND

PAGE SR3

**Economy™**

**BRHE™**  
**B**ALL-LOCK  
**R**ETAINER  
**H**EAVY-DUTY  
**E**ND

PAGE SR5

**BRHS™**  
**B**ALL-LOCK  
**R**ETAINER  
**H**EAVY-DUTY  
**S**QUARE

PAGE SR7

**BRLS™**  
**B**ALL-LOCK RETAINER LIGHT-DUTY SQUARE

**BRLT™**  
**B**ALL-LOCK  
**R**ETAINER  
**L**IGHT-DUTY  
**T**RU-LOCK

PAGE SR2

**TRU&LOCK®**

**BRLR™**  
**B**ALL-LOCK  
**R**ETAINER  
**L**IGHT-DUTY  
**R**OUND

PAGE SR4

**Economy™**

**BRLE™**  
**B**ALL-LOCK  
**R**ETAINER  
**L**IGHT-DUTY  
**E**ND

PAGE SR6

**BRES™**  
**B**ALL-LOCK RETAINER  
**E**XTRA HEAVY-DUTY SQUARE

PAGE SR8

**TRU&LOCK® Retainer Accessories** PAGES SR13-14

**GRSR™**  
**G**ENERAL  
**R**ETAINER  
**S**Houlder  
**R**OUND

PAGE SR9

**PRSR™**  
**P**eerless  
**R**ETAINER  
**S**Houlder  
**R**OUND

PAGE SR11

**Shoulder Retainer Accessories** PAGE SR15

**GRSF™**  
**G**ENERAL  
**R**ETAINER  
**S**Houlder  
**F**ORM

PAGE SR10

**PRSF™**  
**P**eerless  
**R**ETAINER  
**S**Houlder  
**F**ORM

PAGE SR12

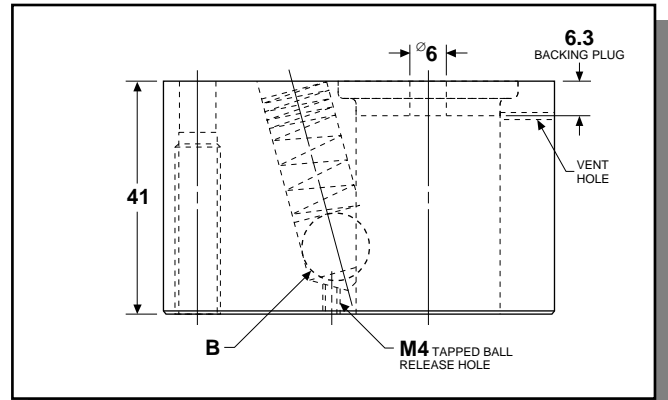
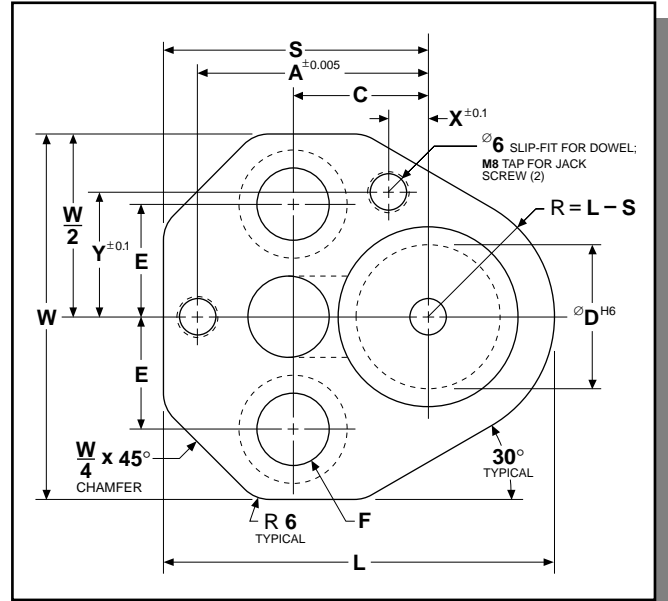
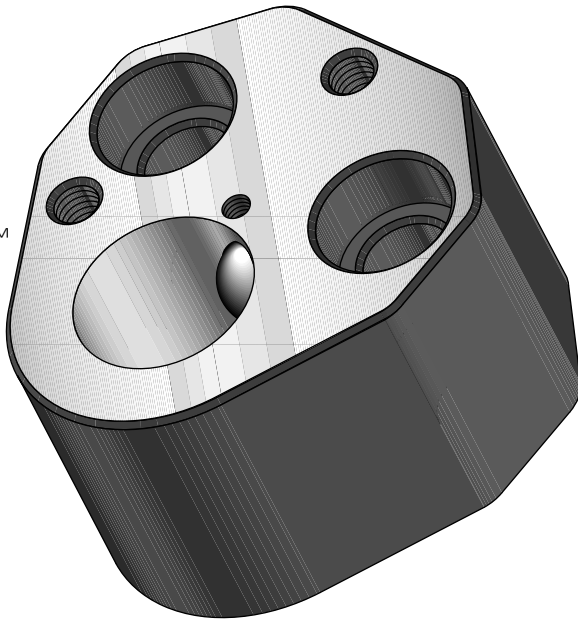
**Release Tools** PAGE SR13

**Accessories for Backing-Plate Style Retainers** PAGE SR14

**Design Tools** PAGE SR15



**BRHT™**  
BALL-LOCK  
RETAINER  
HEAVY-DUTY  
TRU-LOCK



Heavy-duty Lane **TRU-LOCK®** Retainers are recommended for most applications.

**Simple typical mounting:**

1. Drill and tap for two (2) screws.
2. Drill and ream (or bore) for dowels.
3. Insert dowels into die plate, slip retainer onto dowels and tighten screws.

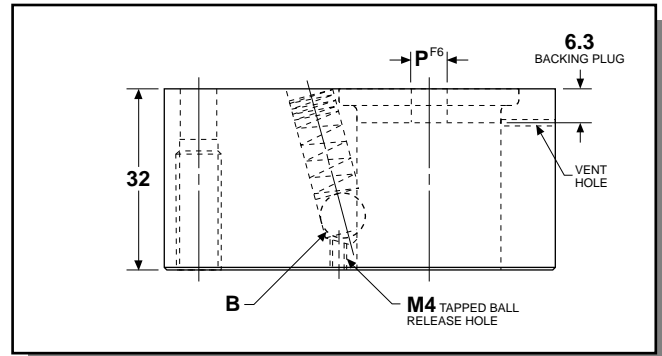
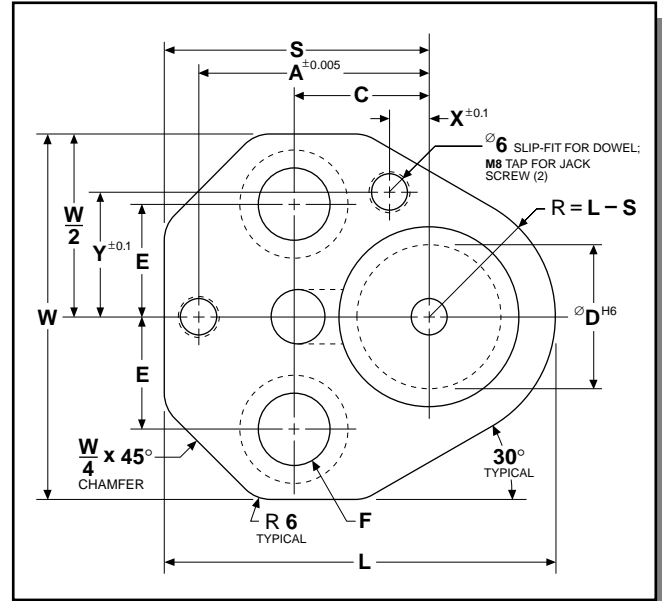
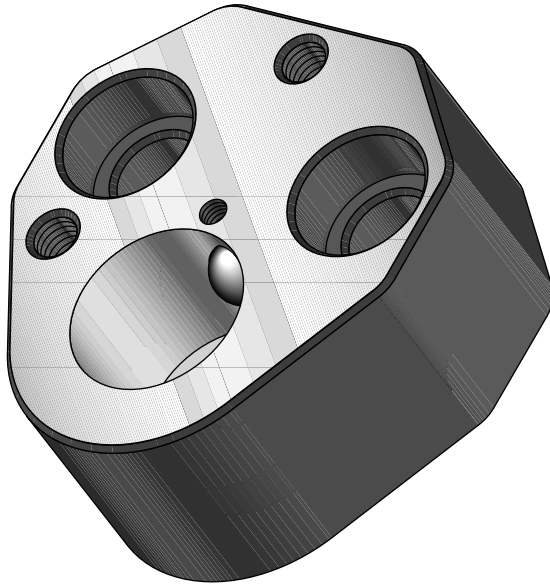
**Ordering Example:**  
**(36) BRHT 25**

**Retainer set includes:**  
2 Socket head cap screws.  
2 Vented and tapped dowels.  
1 Ball release set screw.

| TYPE | "D" | "W"  | "L"  | "S"  | "A"    | "C"   | "E"   | "X"  | "Y"  | "B"  | "F" |
|------|-----|------|------|------|--------|-------|-------|------|------|------|-----|
| BRHT | 10  | 41.0 | 43.5 | 34.0 | 26.924 | 19.05 | 11.12 | 7.5  | 9.0  | 10.0 | M8  |
| BRHT | 13  | 48.5 | 49.6 | 37.0 | 29.972 | 19.05 | 14.27 | 6.5  | 12.0 | 12.0 | M8  |
| BRHT | 16  | 51.7 | 52.7 | 38.6 | 31.750 | 19.05 | 15.87 | 6.0  | 13.5 | 12.0 | M8  |
| BRHT | 20  | 56.8 | 59.3 | 41.9 | 33.528 | 19.05 | 17.47 | 5.0  | 16.5 | 12.0 | M10 |
| BRHT | 25  | 64.5 | 68.9 | 46.7 | 40.640 | 23.82 | 19.84 | 7.0  | 22.0 | 12.0 | M12 |
| BRHT | 32  | 64.5 | 68.9 | 46.7 | 40.640 | 23.82 | 19.84 | 7.0  | 22.0 | 12.0 | M12 |
| BRHT | 40  | 72.9 | 76.4 | 50.5 | 43.993 | 27.00 | 24.00 | 10.0 | 26.0 | 12.0 | M12 |



**BRLT**<sup>TM</sup>  
BALL-LOCK  
RETAINER  
LIGHT-DUTY  
TRU-LOCK



## Lane TRU-LOCK® Retainers...

Offer more strength:  
they're made from through-hardened  
chromium-vanadium steel (AISI 6150).

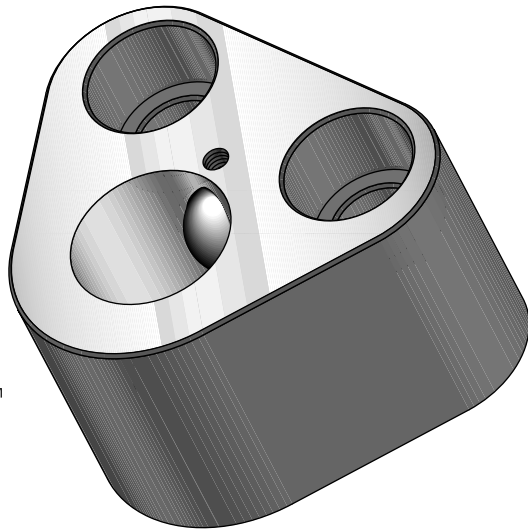
Are the ultimate in precision for standard  
retainers, having a radial accuracy of  $-0.030$ .

Ordering Example:  
**(24) BRLT 25**

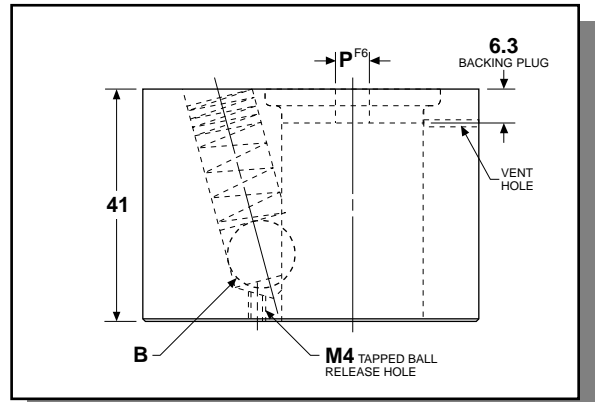
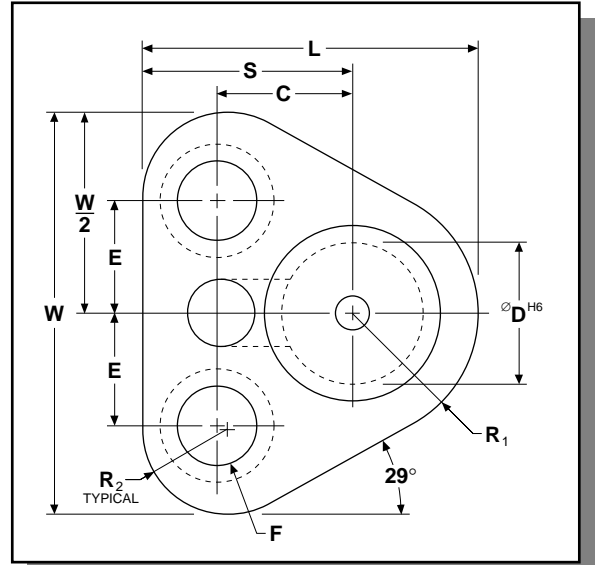
Retainer set includes:  
2 Socket head cap screws.  
2 Vented and tapped dowels.  
1 Ball release set screw.

| TYPE | "D" | "W"  | "L"  | "S"  | "A"    | "C"   | "E"   | "X"  | "Y"  | "B" | "P" | "F" |
|------|-----|------|------|------|--------|-------|-------|------|------|-----|-----|-----|
| BRLT | 6   | 41.0 | 43.5 | 34.0 | 26.924 | 19.05 | 11.12 | 7.5  | 9.0  | 6.0 | 3.0 | M8  |
| BRLT | 10  | 41.0 | 43.5 | 34.0 | 26.924 | 19.05 | 11.12 | 7.5  | 9.0  | 8.0 | 6.0 | M8  |
| BRLT | 13  | 48.5 | 49.6 | 37.0 | 29.972 | 19.05 | 14.27 | 6.5  | 12.0 | 8.0 | 6.0 | M8  |
| BRLT | 16  | 51.7 | 52.7 | 38.6 | 31.750 | 19.05 | 15.87 | 6.0  | 13.5 | 8.0 | 6.0 | M8  |
| BRLT | 20  | 56.8 | 59.3 | 41.9 | 33.528 | 19.05 | 17.47 | 5.0  | 16.5 | 8.0 | 6.0 | M10 |
| BRLT | 25  | 64.5 | 68.9 | 46.7 | 40.640 | 23.82 | 19.84 | 7.0  | 22.0 | 8.0 | 6.0 | M12 |
| BRLT | 32  | 64.5 | 68.9 | 46.7 | 40.640 | 23.82 | 19.84 | 7.0  | 22.0 | 8.0 | 6.0 | M12 |
| BRLT | 38  | 72.9 | 76.4 | 50.5 | 43.993 | 27.00 | 24.00 | 10.0 | 26.0 | 8.0 | 6.0 | M12 |





**BRHR™**  
BALL-LOCK  
RETAINER  
HEAVY-DUTY  
ROUND



**Lane Economy™ Ball-Lock Retainers:**

A cost saving innovation from Lane Punch Corporation made for retaining Round Pointed Punches.

Compared to Lane's Tru-Lock retainers, 2 dowels have been eliminated and the retainer's outside shape has been reduced.

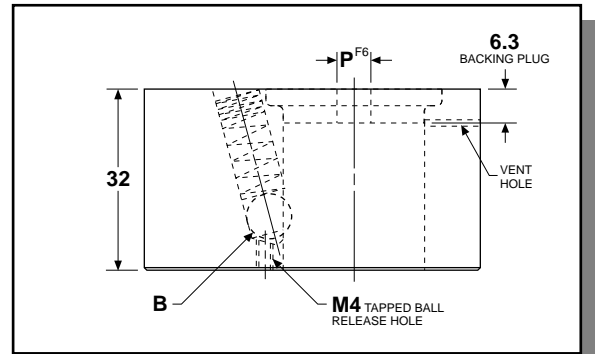
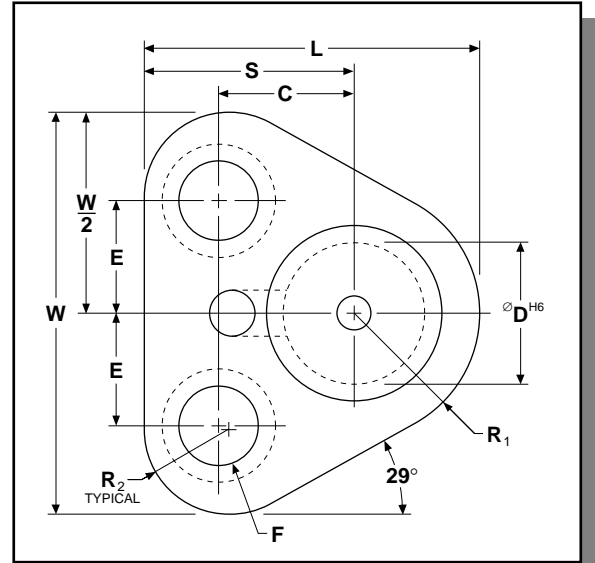
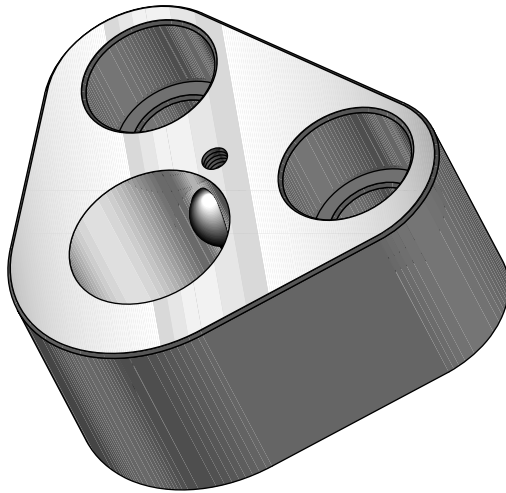
**Ordering Example:  
(12) BRHR 25**

**Retainer set includes**  
2 Socket head cap screws  
1 Vented and tapped dowel  
1 Ball release set screw



| TYPE | "D" | "W"   | "L"  | "S" | "R <sub>1</sub> " | "R <sub>2</sub> " | "C"   | "E"   | "B"  | "P" | "F" |
|------|-----|-------|------|-----|-------------------|-------------------|-------|-------|------|-----|-----|
| BRHR | 10  | 40.61 | 38.5 | 29  | 9.5               | 9.5               | 19.05 | 11.12 | 10.0 | 6.0 | M8  |
| BRHR | 13  | 47.93 | 41.7 | 29  | 12.7              | 9.5               | 19.05 | 14.27 | 12.0 | 6.0 | M8  |
| BRHR | 16  | 51.59 | 43.3 | 29  | 14.3              | 9.5               | 19.05 | 15.87 | 12.0 | 6.0 | M8  |
| BRHR | 20  | 57.93 | 47.5 | 30  | 17.5              | 11.0              | 19.05 | 17.47 | 12.0 | 6.0 | M10 |
| BRHR | 25  | 70.85 | 59.2 | 37  | 22.2              | 15.0              | 23.82 | 19.84 | 12.0 | 6.0 | M12 |
| BRHR | 32  | 70.85 | 59.2 | 37  | 22.2              | 15.0              | 23.82 | 19.84 | 12.0 | 6.0 | M12 |

**BRLR™**  
**B**ALL-LOCK  
**R**ETAINER  
**L**IGHT-DUTY  
**R**OUND



**Lane Economy™ Ball-Lock Retainers:**

A cost saving innovation from Lane Punch Corporation made for retaining Round Pointed Punches.

Compared to Lane's Tru-Lock retainers, 2 dowels have been eliminated and the retainer's outside shape has been reduced.

**Ordering Example:**  
**(24) BRLR 25**

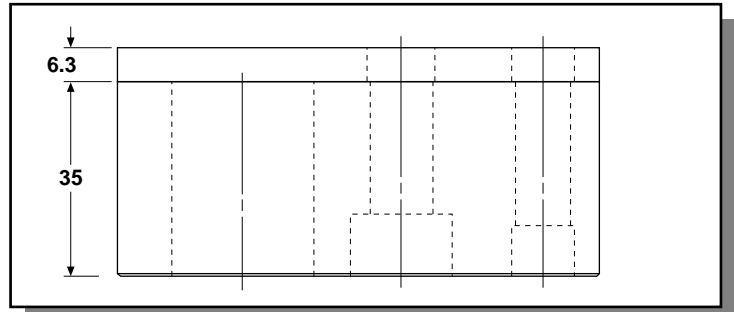
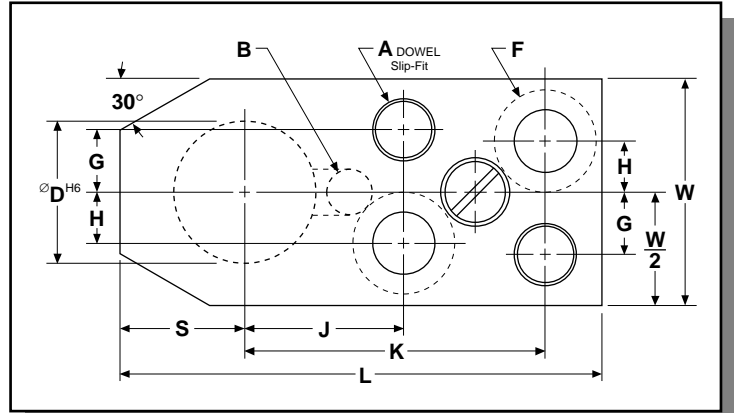
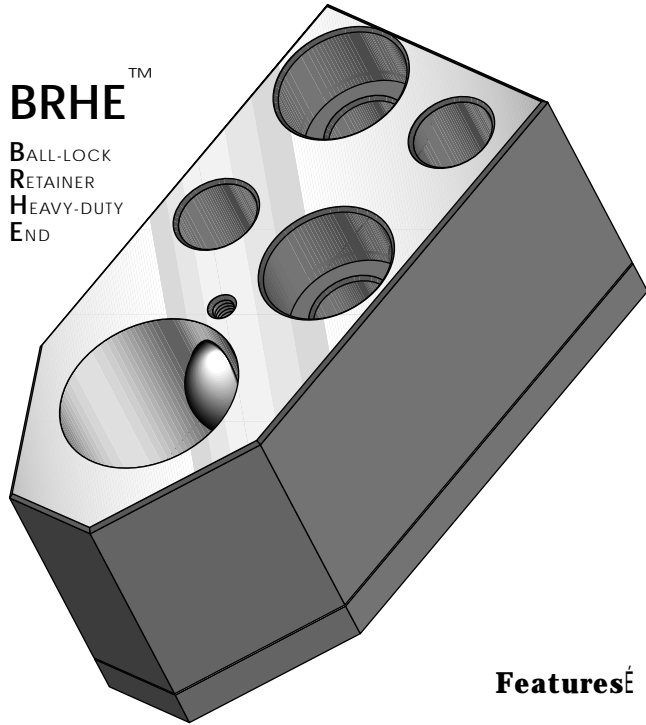
**Retainer set includes:**  
 2 Socket head cap screws  
 1 Vented and tapped dowel  
 1 Ball release set screw.

| TYPE | "D" | "W"   | "L"  | "S" | "R <sub>1</sub> " | "R <sub>2</sub> " | "C"   | "E"   | "B" | "P" | "F" |
|------|-----|-------|------|-----|-------------------|-------------------|-------|-------|-----|-----|-----|
| BRLR | 10  | 40.61 | 38.5 | 29  | 9.5               | 9.5               | 19.05 | 11.12 | 8.0 | 6.0 | M8  |
| BRLR | 13  | 47.93 | 41.7 | 29  | 12.7              | 9.5               | 19.05 | 14.27 | 8.0 | 6.0 | M8  |
| BRLR | 16  | 51.59 | 43.3 | 29  | 14.3              | 9.5               | 19.05 | 15.87 | 8.0 | 6.0 | M8  |
| BRLR | 20  | 57.93 | 47.5 | 30  | 17.5              | 11.0              | 19.05 | 17.47 | 8.0 | 6.0 | M10 |
| BRLR | 25  | 70.85 | 59.2 | 37  | 22.2              | 15.0              | 23.82 | 19.84 | 8.0 | 6.0 | M12 |
| BRLR | 32  | 70.85 | 59.2 | 37  | 22.2              | 15.0              | 23.82 | 19.84 | 8.0 | 6.0 | M12 |



**BRHE™**

**B**ALL-LOCK  
**R**ETAINER  
**H**EAVY-DUTY  
**E**ND



**Features**

- Full backing plate
- Completely interchangeable dowels
- Location held to  $-0.01$

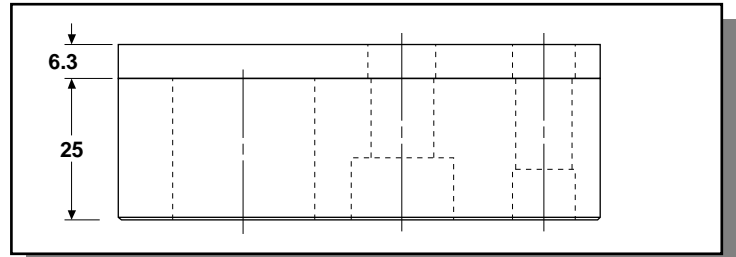
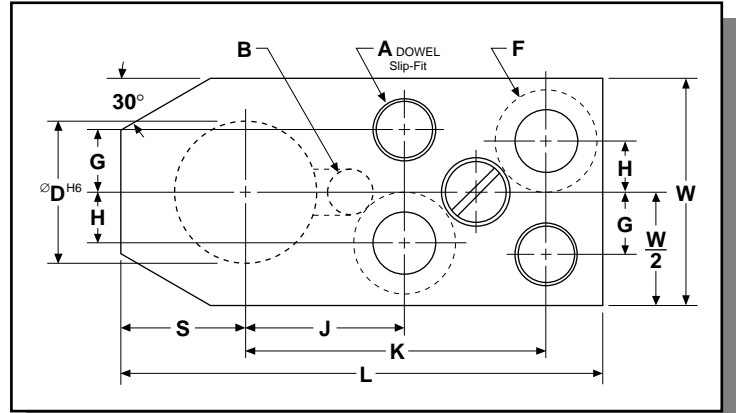
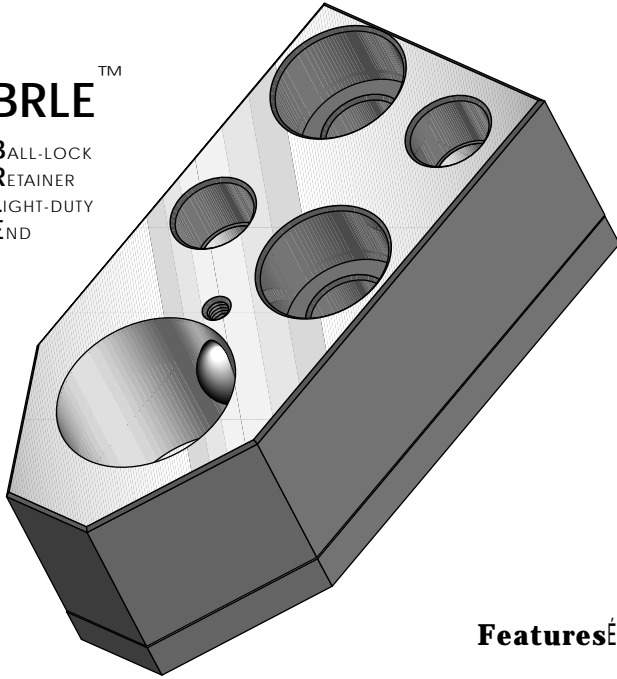
**Ordering Example:**  
**(10) BRHE 25**

**Retainer set includes:**  
2 Socket head cap screws.  
2 Vented and tapped dowels.



| TYPE | "D" | "W" | "L" | "S" | "J" | "K" | "G" | "H" | "A"  | "B"  | "F" |
|------|-----|-----|-----|-----|-----|-----|-----|-----|------|------|-----|
| BRHE | 10  | 32  | 75  | 15  | 25  | 50  | 9   | 7   | 8.0  | 10.0 | M8  |
| BRHE | 13  | 32  | 75  | 15  | 25  | 50  | 9   | 7   | 8.0  | 12.0 | M8  |
| BRHE | 16  | 32  | 75  | 15  | 25  | 50  | 9   | 7   | 8.0  | 12.0 | M8  |
| BRHE | 20  | 42  | 85  | 22  | 28  | 53  | 11  | 9   | 10.0 | 12.0 | M10 |
| BRHE | 25  | 42  | 85  | 22  | 28  | 53  | 11  | 9   | 10.0 | 12.0 | M10 |
| BRHE | 32  | 50  | 100 | 25  | 35  | 65  | 16  | 14  | 10.0 | 12.0 | M12 |
| BRHE | 40  | 60  | 110 | 30  | 40  | 68  | 18  | 16  | 10.0 | 12.0 | M12 |

**BRLE™**  
BALL-LOCK  
RETAINER  
LIGHT-DUTY  
END



**Features:**

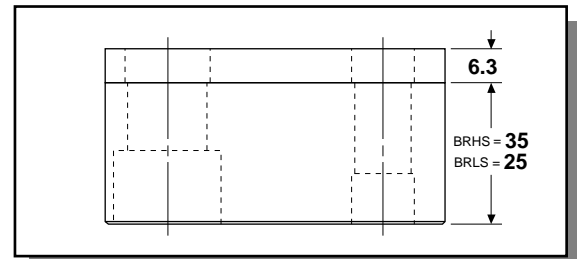
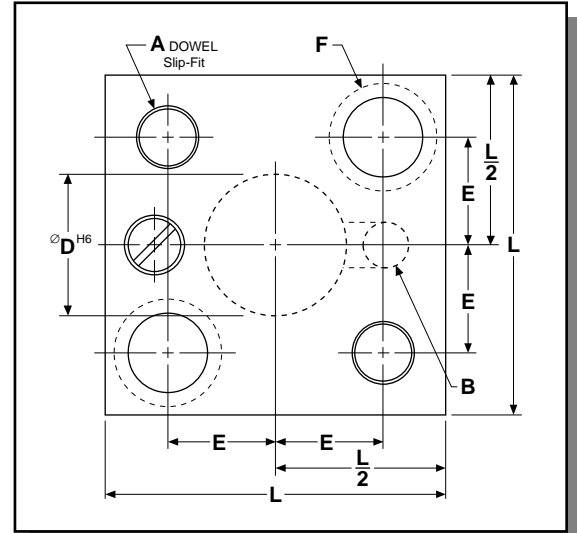
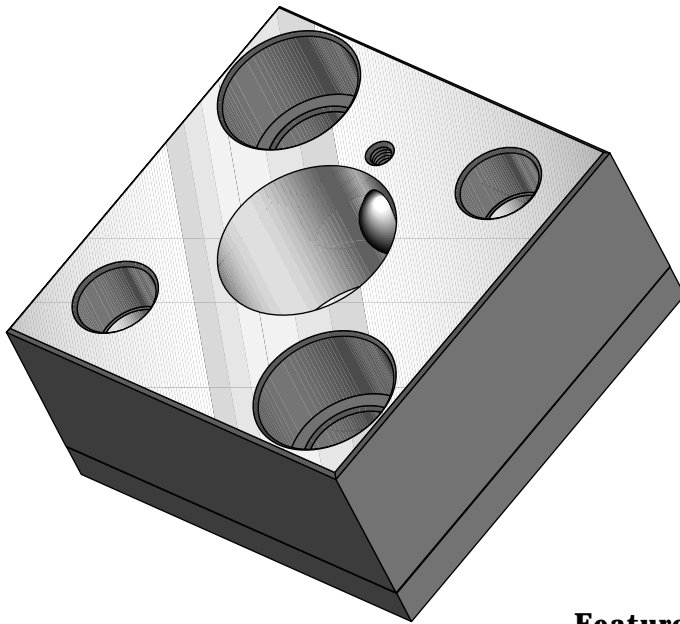
- Full backing plate
- Completely interchangeable dowels
- Location held to  $-0.01$

Ordering Example:  
**(4) BRLE 25**

Retainer set includes:  
2 Socket head cap screws.  
2 Vented and tapped dowels.



| TYPE | "D" | "W" | "L" | "S" | "J" | "K" | "G" | "H" | "A"  | "B" | "F" |
|------|-----|-----|-----|-----|-----|-----|-----|-----|------|-----|-----|
| BRLE | 6   | 32  | 75  | 15  | 25  | 50  | 9   | 7   | 8.0  | 6.0 | M8  |
| BRLE | 10  | 32  | 75  | 15  | 25  | 50  | 9   | 7   | 8.0  | 8.0 | M8  |
| BRLE | 13  | 32  | 75  | 15  | 25  | 50  | 9   | 7   | 8.0  | 8.0 | M8  |
| BRLE | 16  | 32  | 75  | 15  | 25  | 50  | 9   | 7   | 8.0  | 8.0 | M8  |
| BRLE | 20  | 42  | 85  | 22  | 28  | 53  | 11  | 9   | 10.0 | 8.0 | M10 |
| BRLE | 25  | 42  | 85  | 22  | 28  | 53  | 11  | 9   | 10.0 | 8.0 | M10 |



**Features:**

- Full backing plate
- Completely interchangeable dowels
- Location held to  $-0.01$

| TYPE | "D" | "L" | "E"  | "A"  | "B"  | "F" |
|------|-----|-----|------|------|------|-----|
| BRHS | 10  | 45  | 13.0 | 8.0  | 10.0 | M8  |
| BRHS | 13  | 45  | 13.0 | 8.0  | 12.0 | M8  |
| BRHS | 16  | 45  | 13.0 | 8.0  | 12.0 | M8  |
| BRHS | 20  | 56  | 16.0 | 10.0 | 12.0 | M10 |
| BRHS | 25  | 63  | 20.0 | 10.0 | 12.0 | M12 |
| BRHS | 32  | 70  | 23.5 | 10.0 | 12.0 | M12 |
| BRHS | 40  | 70  | 23.5 | 10.0 | 12.0 | M12 |

Ordering Example:  
**(9) BRHS 25**

Retainer set includes:  
2 Socket head cap screws.  
2 Vented & tapped dowels.

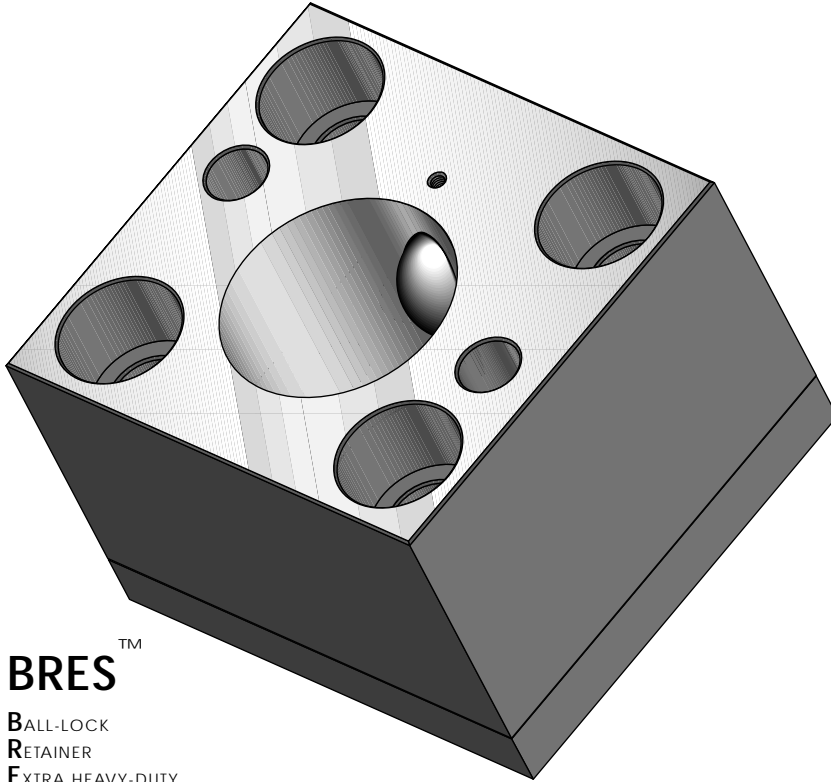


| TYPE | "D" | "L" | "E"  | "A"  | "B" | "F" |
|------|-----|-----|------|------|-----|-----|
| BRLS | 6   | 45  | 13.0 | 8.0  | 6.0 | M8  |
| BRLS | 10  | 45  | 13.0 | 8.0  | 8.0 | M8  |
| BRLS | 13  | 45  | 13.0 | 8.0  | 8.0 | M8  |
| BRLS | 16  | 45  | 13.0 | 8.0  | 8.0 | M8  |
| BRLS | 20  | 56  | 16.0 | 10.0 | 8.0 | M10 |
| BRLS | 25  | 63  | 20.0 | 10.0 | 8.0 | M12 |

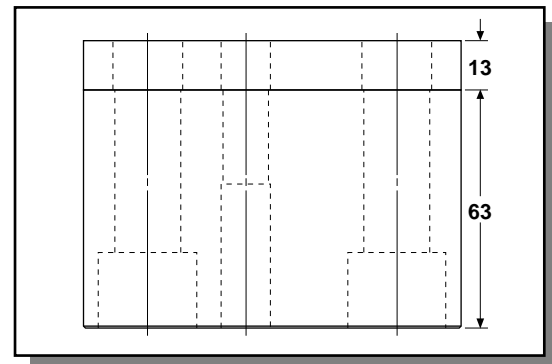
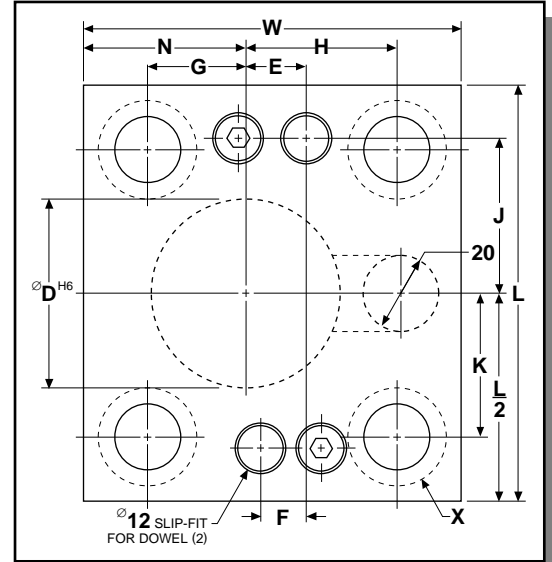
Ordering Example:  
**(6) BRLS 25**

Retainer set includes:  
2 Socket head cap screws.  
2 Vented & tapped dowels.





**BRES™**  
BALL-LOCK  
RETAINER  
EXTRA HEAVY-DUTY  
SQUARE



**Lane Extra Heavy-Duty Retainers** are built for severe stripping applications.

An Extra Heavy-Duty Ball-Lock (20mm ball) provides a positive lock for heavy gage (above 6mm) stock thickness.

Dowels are located  $\pm 0.01$  to provide interchangeability.

Ordering  
Example:  
**(3) BRES 50**

Retainer set includes:  
2 Socket head cap screws.  
2 Dowels.



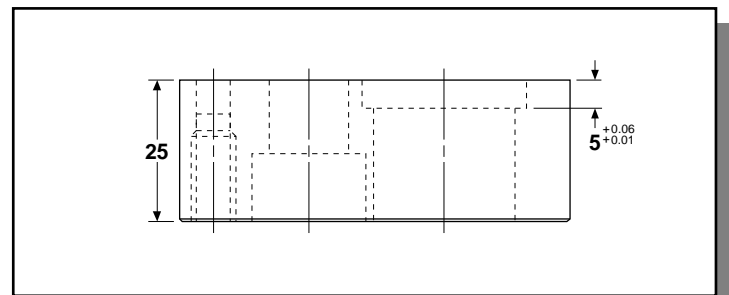
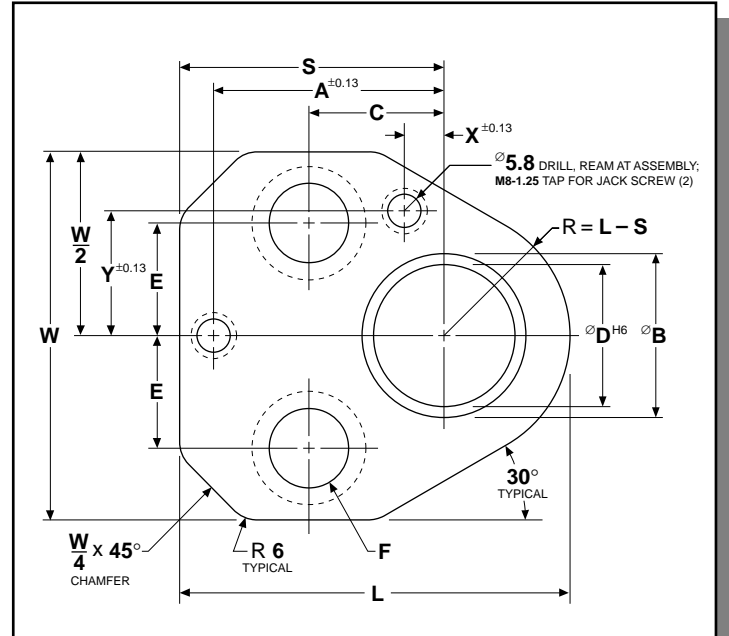
| TYPE | "D" | "W" | "L" | "N" | "E" | "F" | "G" | "H" | "J" | "K" | "X" |
|------|-----|-----|-----|-----|-----|-----|-----|-----|-----|-----|-----|
| BRES | 25  | 75  | 80  | 30  | 8   | 3   | 17  | 32  | 29  | 27  | M12 |
| BRES | 32  | 80  | 90  | 34  | 11  | 9   | 21  | 33  | 34  | 32  | M12 |
| BRES | 40  | 85  | 95  | 35  | 14  | 16  | 22  | 37  | 36  | 34  | M12 |
| BRES | 45  | 95  | 100 | 41  | 11  | 11  | 26  | 39  | 37  | 35  | M16 |
| BRES | 50  | 100 | 110 | 44  | 16  | 16  | 29  | 41  | 42  | 40  | M16 |
| BRES | 56  | 110 | 115 | 48  | 21  | 28  | 31  | 45  | 43  | 41  | M16 |
| BRES | 63  | 115 | 120 | 50  | 24  | 35  | 33  | 48  | 46  | 44  | M16 |

Tool Steel Rc 53-56

Stripping Force: 4,008 kg.

**GRSR**<sup>™</sup>

GENERAL  
RETAINER  
SHOULDER  
ROUND



**A Manual Solution for Round Shoulder Punches.**

User locates, drills and taps mounting screw holes. After assembly, proper location is checked and screws are tightened. Then the dowel holes (which are furnished undersized) are transferred by drilling and reaming in place.

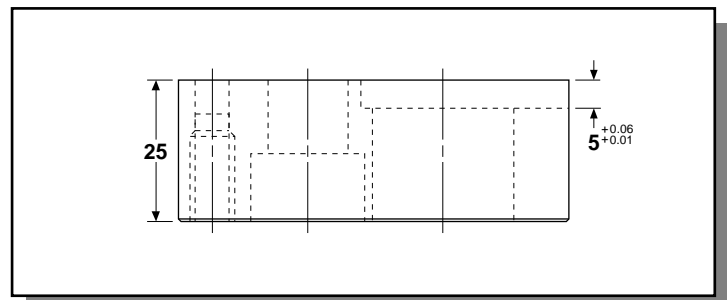
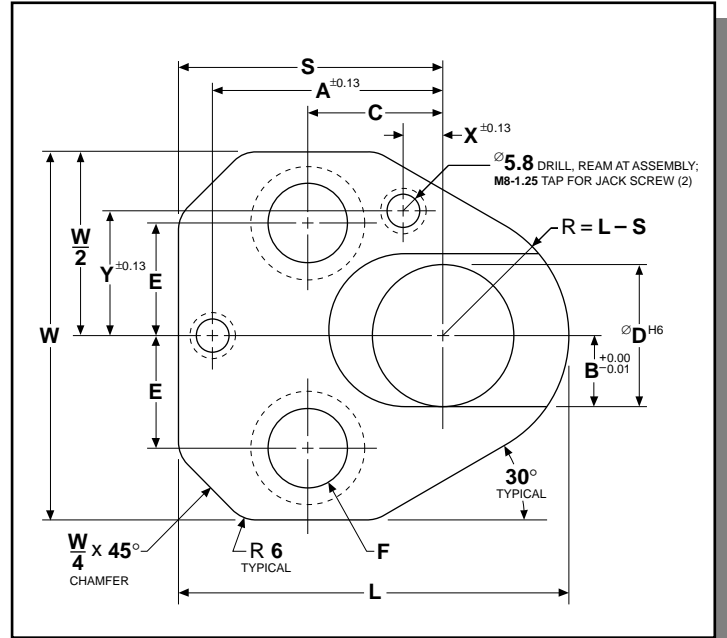
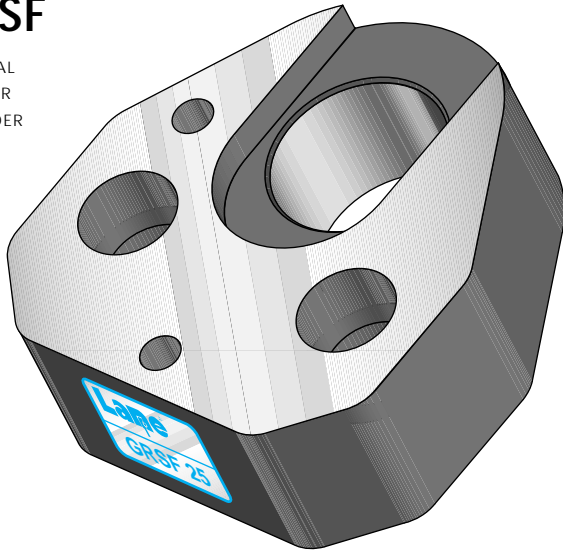
Ordering Example:  
**(2) GRSR 25**

**Retainer set includes:**  
2 Socket head cap screws.  
2 Vented and tapped dowels.

| TYPE | "D" | "W"  | "L"  | "B"  | "S"  | "A"    | "C"   | "E"   | "X" | "Y"  | "F" |
|------|-----|------|------|------|------|--------|-------|-------|-----|------|-----|
| GRSR | 10  | 41.0 | 43.5 | 14.0 | 34.0 | 26.924 | 19.05 | 11.12 | 7.5 | 9.0  | M8  |
| GRSR | 13  | 48.5 | 49.6 | 17.0 | 37.0 | 29.972 | 19.05 | 14.27 | 6.5 | 12.0 | M8  |
| GRSR | 16  | 51.7 | 52.7 | 20.0 | 38.6 | 31.750 | 19.05 | 15.87 | 6.0 | 13.5 | M8  |
| GRSR | 20  | 56.8 | 59.3 | 24.0 | 41.9 | 33.528 | 19.05 | 17.47 | 5.0 | 16.5 | M10 |
| GRSR | 25  | 64.5 | 68.9 | 29.0 | 46.7 | 40.640 | 23.82 | 19.84 | 7.0 | 22.0 | M12 |
| GRSR | 32  | 64.5 | 68.9 | 36.0 | 46.7 | 40.640 | 23.82 | 19.84 | 7.0 | 22.0 | M12 |

## GRSF™

GENERAL  
RETAINER  
SHOULDER  
FORM



### A Fast Manual Way to Locate Shaped and Form-Pointed Punches.

A standard K2 key flat orients the shape *inside* the retainer.

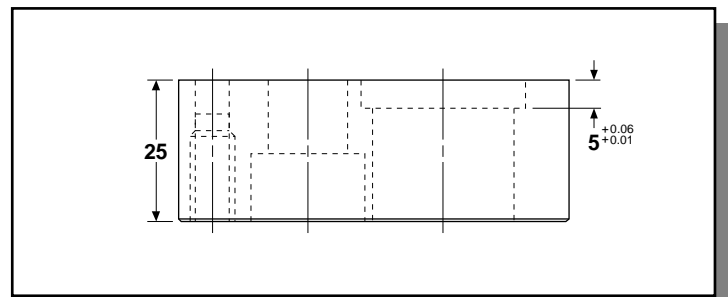
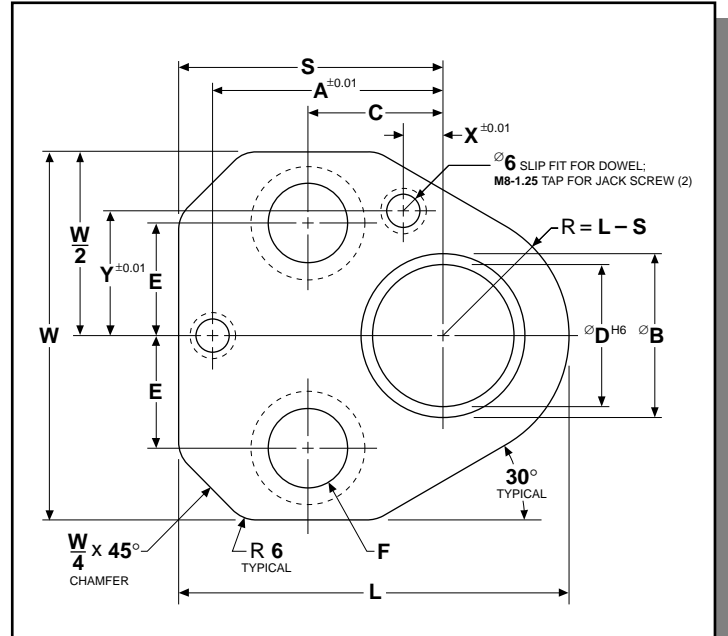
User locates, drills and taps mounting screw holes. After assembly and tightening of screws, the dowel holes (furnished undersized) are transferred, drilled and reamed in place.

Ordering Example:  
**(4) GR SF 25**

Retainer set includes:  
2 Socket head cap screws.  
2 Vented and tapped dowels.

| TYPE | "D" | "W"  | "L"  | "B"  | "S"  | "A"    | "C"   | "E"   | "X" | "Y"  | "F" |
|------|-----|------|------|------|------|--------|-------|-------|-----|------|-----|
| GRSF | 10  | 41.0 | 43.5 | 5.0  | 34.0 | 26.924 | 19.05 | 11.12 | 7.5 | 9.0  | M8  |
| GRSF | 13  | 48.5 | 49.6 | 6.5  | 37.0 | 29.972 | 19.05 | 14.27 | 6.5 | 12.0 | M8  |
| GRSF | 16  | 51.7 | 52.7 | 8.0  | 38.6 | 31.750 | 19.05 | 15.87 | 6.0 | 13.5 | M8  |
| GRSF | 20  | 56.8 | 59.3 | 10.0 | 41.9 | 33.528 | 19.05 | 17.47 | 5.0 | 16.5 | M10 |
| GRSF | 25  | 64.5 | 68.9 | 12.5 | 46.7 | 40.640 | 23.82 | 19.84 | 7.0 | 22.0 | M12 |
| GRSF | 32  | 64.5 | 68.9 | 16.0 | 46.7 | 40.640 | 23.82 | 19.84 | 7.0 | 22.0 | M12 |

**PRSR™**  
P  
E  
E  
R  
L  
E  
S  
S  
R  
E  
T  
A  
I  
N  
E  
R  
S  
H  
O  
U  
L  
D  
E  
R  
R  
O  
U  
N  
D



**A Speedy Solution for Round Punches and Pilots.**

Dowels are finished, and retainer ready for CNC mounting. Counterbore is sized to accept shoulder/headed punches. Also, the dowel holes are tapped for easy removal in confined spaces.

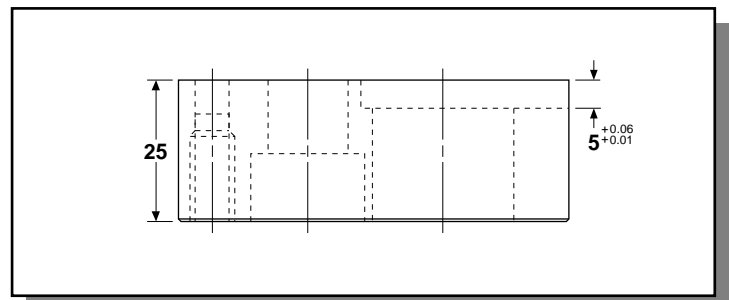
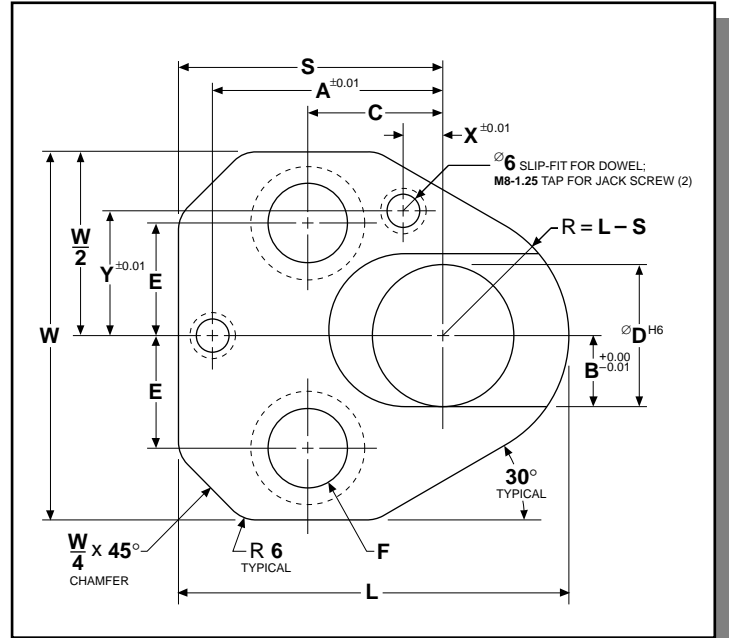
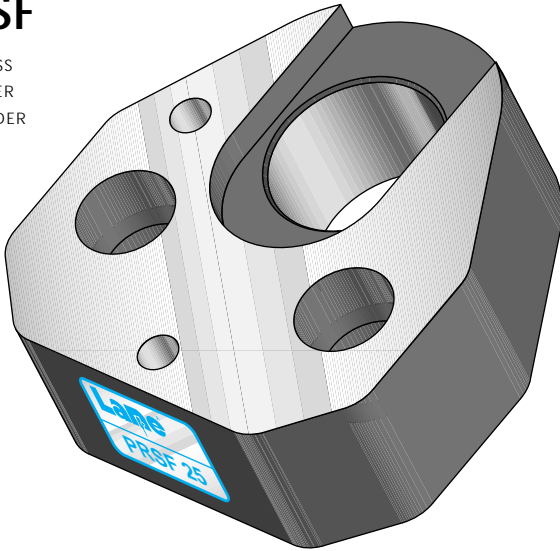
**Ordering Example:**  
**(3) PRSR 25**

**Retainer set includes:**  
2 Socket head cap screws.  
2 Vented and tapped dowels.

| TYPE | "D" | "W"  | "L"  | "B"  | "S"  | "A"    | "C"   | "E"   | "X" | "Y"  | "F" |
|------|-----|------|------|------|------|--------|-------|-------|-----|------|-----|
| PRSR | 10  | 41.0 | 43.5 | 14.0 | 34.0 | 26.924 | 19.05 | 11.12 | 7.5 | 9.0  | M8  |
| PRSR | 13  | 48.5 | 49.6 | 17.0 | 37.0 | 29.972 | 19.05 | 14.27 | 6.5 | 12.0 | M8  |
| PRSR | 16  | 51.7 | 52.7 | 20.0 | 38.6 | 31.750 | 19.05 | 15.87 | 6.0 | 13.5 | M8  |
| PRSR | 20  | 56.8 | 59.3 | 24.0 | 41.9 | 33.528 | 19.05 | 17.47 | 5.0 | 16.5 | M10 |
| PRSR | 25  | 64.5 | 68.9 | 29.0 | 46.7 | 40.640 | 23.82 | 19.84 | 7.0 | 22.0 | M12 |
| PRSR | 32  | 64.5 | 68.9 | 36.0 | 46.7 | 40.640 | 23.82 | 19.84 | 7.0 | 22.0 | M12 |

**PRSF™**

PEERLESS  
RETAINER  
SHOULDER  
FORM



**The Fastest, Least Expensive Way to Mount Shaped and Form-Pointed Punches.**

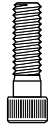
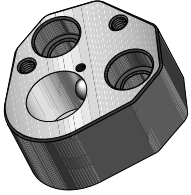
A standard K2 key flat orients the shape inside the retainer. Just place two round dowel holes in your die shoe, and you're ready to locate complex shaped punches.

Dowels are finished, and dowel holes are slip-fit sized. Retainer is ready for CNC mounting.

**Ordering Example:  
(2) PRSF 25**

**Retainer set includes:**  
2 Socket head cap screws.  
2 Vented and tapped dowels.

| TYPE | "D" | "W"  | "L"  | "B"  | "S"  | "A"    | "C"   | "E"   | "X" | "Y"  | "F" |
|------|-----|------|------|------|------|--------|-------|-------|-----|------|-----|
| PRSF | 10  | 41.0 | 43.5 | 5.0  | 34.0 | 26.924 | 19.05 | 11.12 | 7.5 | 9.0  | M8  |
| PRSF | 13  | 48.5 | 49.6 | 6.5  | 37.0 | 29.972 | 19.05 | 14.27 | 6.5 | 12.0 | M8  |
| PRSF | 16  | 51.7 | 52.7 | 8.0  | 38.6 | 31.750 | 19.05 | 15.87 | 6.0 | 13.5 | M8  |
| PRSF | 20  | 56.8 | 59.3 | 10.0 | 41.9 | 33.528 | 19.05 | 17.47 | 5.0 | 16.5 | M10 |
| PRSF | 25  | 64.5 | 68.9 | 12.5 | 46.7 | 40.640 | 23.82 | 19.84 | 7.0 | 22.0 | M12 |
| PRSF | 32  | 64.5 | 68.9 | 16.0 | 46.7 | 40.640 | 23.82 | 19.84 | 7.0 | 22.0 | M12 |

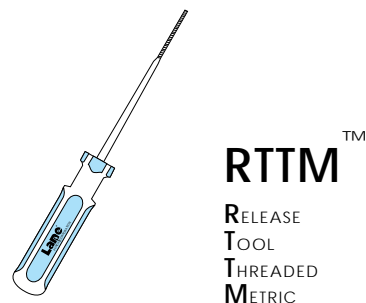
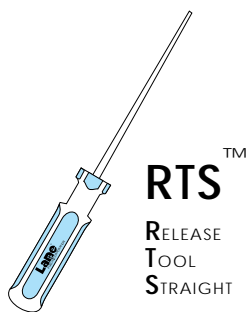
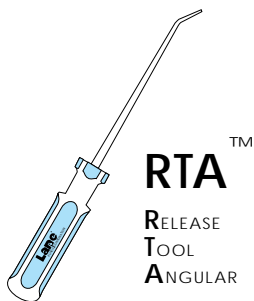


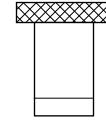
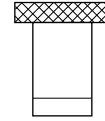
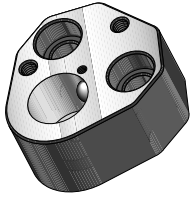
| RETAINER CATALOG NUMBER | SOCKET HEAD CAP SCREW   | VENTED & TAPPED PULL DOWELS | BALL & DIA.     | BALL RELEASE SCREW | TRU-LOCK SPRING | OPTIONAL STIFF SPRING | INNER BOOSTER SPRING |
|-------------------------|-------------------------|-----------------------------|-----------------|--------------------|-----------------|-----------------------|----------------------|
| BRHT 10                 | BA M8-40<br>M8 x 40     | BA 6-20<br>ø6 x 20          | BA 71-10<br>ø10 | BA 94-4<br>M4 x 25 | BA 82-10<br>ø10 | BA 83-10<br>ø10       | BA 84-10<br>ø10      |
| BRHT 13                 | BA M8-40<br>M8 x 40     | BA 6-20<br>ø6 x 20          | BA 71-12<br>ø12 | BA 94-4<br>M4 x 25 | BA 82-12<br>ø12 | BA 83-12<br>ø12       | BA 84-12<br>ø12      |
| BRHT 16                 | BA M8-40<br>M8 x 40     | BA 6-20<br>ø6 x 20          | BA 71-12<br>ø12 | BA 94-4<br>M4 x 25 | BA 82-12<br>ø12 | BA 83-12<br>ø12       | BA 84-12<br>ø12      |
| BRHT 20                 | BA M10-50<br>M10 x 50   | BA 6-20<br>ø6 x 20          | BA 71-12<br>ø12 | BA 94-4<br>M4 x 25 | BA 82-12<br>ø12 | BA 83-12<br>ø12       | BA 84-12<br>ø12      |
| BRHT 25                 | BA M12-50<br>M12 x 50   | BA 6-20<br>ø6 x 20          | BA 71-12<br>ø12 | BA 94-4<br>M4 x 25 | BA 82-12<br>ø12 | BA 83-12<br>ø12       | BA 84-12<br>ø12      |
| BRHT 32                 | BA M12-50<br>M12 x 50   | BA 6-20<br>ø6 x 20          | BA 71-12<br>ø12 | BA 94-4<br>M4 x 25 | BA 82-12<br>ø12 | BA 83-12<br>ø12       | BA 84-12<br>ø12      |
| BRHT 40                 | BA M12 x 50<br>M12 x 50 | BA 6-20<br>ø6 x 20          | BA 71-12<br>ø12 | BA 94-4<br>M4 x 25 | BA 82-12<br>ø12 | BA 83-12<br>ø12       | BA 84-12<br>ø12      |

|         |                       |                     |               |                    |               |   |   |
|---------|-----------------------|---------------------|---------------|--------------------|---------------|---|---|
| BRLT 6  | BA M8-35<br>M8 x 35   | BA 3-20*<br>ø3 x 20 | BA 71-6<br>ø6 | BA 94-4<br>M4 x 25 | BA 81-6<br>ø6 | — | — |
| BRLT 10 | BA M8-35<br>M8 x 35   | BA 6-20<br>ø6 x 20  | BA 71-8<br>ø8 | BA 94-4<br>M4 x 25 | BA 81-8<br>ø8 | — | — |
| BRLT 13 | BA M8-35<br>M8 x 35   | BA 6-20<br>ø6 x 20  | BA 71-8<br>ø8 | BA 94-4<br>M4 x 25 | BA 81-8<br>ø8 | — | — |
| BRLT 16 | BA M8-35<br>M8 x 35   | BA 6-20<br>ø6 x 20  | BA 71-8<br>ø8 | BA 94-4<br>M4 x 25 | BA 81-8<br>ø8 | — | — |
| BRLT 20 | BA M10-35<br>M10 x 35 | BA 6-20<br>ø6 x 20  | BA 71-8<br>ø8 | BA 94-4<br>M4 x 25 | BA 81-8<br>ø8 | — | — |
| BRLT 25 | BA M12-35<br>M12 x 35 | BA 6-20<br>ø6 x 20  | BA 71-8<br>ø8 | BA 94-4<br>M4 x 25 | BA 81-8<br>ø8 | — | — |
| BRLT 32 | BA M12-35<br>M12 x 35 | BA 6-20<br>ø6 x 20  | BA 71-8<br>ø8 | BA 94-4<br>M4 x 25 | BA 81-8<br>ø8 | — | — |
| BRLT 38 | BA M12-35<br>M12 x 35 | BA 6-20<br>ø6 x 20  | BA 71-8<br>ø8 | BA 94-4<br>M4 x 25 | BA 81-8<br>ø8 | — | — |

\* ø3 dowels are not tapped.

*Release Tools*





| RETAINER CATALOG NUMBER | BACKING PLUGS       |                 |            | SET SCREW         | DRILL BUSHING | REAM BUSHING | RETAINER NUTS |
|-------------------------|---------------------|-----------------|------------|-------------------|---------------|--------------|---------------|
|                         | IN-LINE DOWEL PLUG  | DIE BUTTON PLUG | SOLID PLUG |                   |               |              |               |
| BRHT 10                 | BA 91-10<br>∅6 hole | —               | BA 93-10   | BA 96-8<br>M8 x 8 | RDB 10        | RRB 10       | RN 8          |
| BRHT 13                 | BA 91-13<br>∅6 hole | —               | BA 93-13   | BA 96-8<br>M8 x 8 | RDB 13        | RRB 13       | RN 8          |
| BRHT 16                 | BA 91-16<br>∅6 hole | —               | BA 93-16   | BA 96-8<br>M8 x 8 | RDB 16        | RRB 16       | RN 8          |
| BRHT 20                 | BA 91-20<br>∅6 hole | —               | BA 93-20   | BA 96-8<br>M8 x 8 | RDB 20        | RRB 20       | RN 10         |
| BRHT 25                 | BA 91-25<br>∅6 hole | —               | BA 93-25   | BA 96-8<br>M8 x 8 | RDB 25        | RRB 25       | RN 12         |
| BRHT 32                 | BA 91-32<br>∅6 hole | —               | BA 93-32   | BA 96-8<br>M8 x 8 | RDB 32        | RRB 32       | RN 12         |
| BRHT 40                 | BA 91-40<br>∅6 hole | —               | BA 93-40   | BA 96-8<br>M8 x 8 | RDB 40        | RRB 40       | RN 12         |

|         |                     |          |          |                   |        |        |       |
|---------|---------------------|----------|----------|-------------------|--------|--------|-------|
| BRLT 6  | BA 91-06<br>∅3 hole | —        | BA 93-6  | BA 96-8<br>M8 x 8 | RDB 6  | RRB 6  | RN 8  |
| BRLT 10 | BA 91-10<br>∅6 hole | —        | BA 93-10 | BA 96-8<br>M8 x 8 | RDB 10 | RRB 10 | RN 8  |
| BRLT 13 | BA 91-13<br>∅6 hole | BA 92-13 | BA 93-13 | BA 96-8<br>M8 x 8 | RDB 13 | RRB 13 | RN 8  |
| BRLT 16 | BA 91-16<br>∅6 hole | BA 92-16 | BA 93-16 | BA 96-8<br>M8 x 8 | RDB 16 | RRB 16 | RN 8  |
| BRLT 20 | BA 91-20<br>∅6 hole | BA 92-20 | BA 93-20 | BA 96-8<br>M8 x 8 | RDB 20 | RRB 20 | RN 10 |
| BRLT 25 | BA 91-25<br>∅6 hole | BA 92-25 | BA 93-25 | BA 96-8<br>M8 x 8 | RDB 25 | RRB 25 | RN 12 |
| BRLT 32 | BA 91-32<br>∅6 hole | BA 92-32 | BA 93-32 | BA 96-8<br>M8 x 8 | RDB 32 | RRB 32 | RN 12 |
| BRLT 38 | BA 91-38<br>∅6 hole | BA 92-38 | BA 93-38 | BA 96-8<br>M8 x 8 | RDB 38 | RRB 38 | RN 12 |

## Accessories for Backing-Plate Style Retainers



**BA 71-20**  
∅20mm Ball



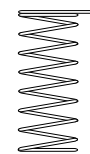
**6 S**  
6mm Spring



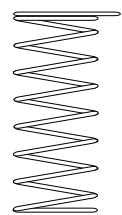
**8 S**  
8mm Spring



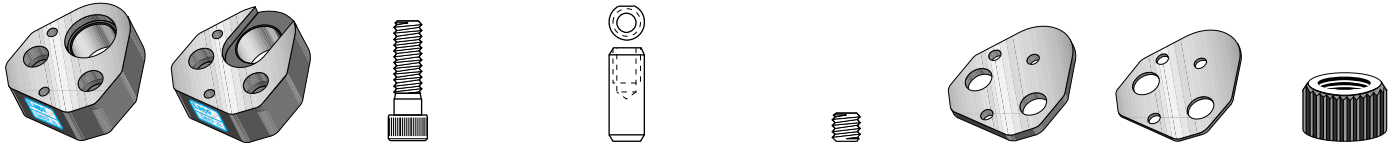
**10 S**  
10mm Spring



**12 S**  
12mm Spring



**20 S**  
20mm Spring



| RETAINER CATALOG NUMBER | RETAINER CATALOG NUMBER | SOCKET HEAD CAP SCREW | VENTED & TAPPED PULL DOWELS | SET SCREW         | BACKING PLATE       | SHIM PLATE          | RETAINER NUTS |
|-------------------------|-------------------------|-----------------------|-----------------------------|-------------------|---------------------|---------------------|---------------|
| GRSR 10                 | GRSF 10                 | BA M8-35<br>M8 x 35   | BA 6-20<br>Ø6 x 20          | BA 96-8<br>M8 x 8 | GBP 10<br>5mm thick | GSP 10<br>2mm thick | RN 8          |
| GRSR 13                 | GRSF 13                 | BA M8-35<br>M8 x 35   | BA 6-20<br>Ø6 x 20          | BA 96-8<br>M8 x 8 | GBP 13<br>5mm thick | GSP 13<br>2mm thick | RN 8          |
| GRSR 16                 | GRSF 16                 | BA M8-35<br>M8 x 35   | BA 6-20<br>Ø6 x 20          | BA 96-8<br>M8 x 8 | GBP 16<br>5mm thick | GSP 16<br>2mm thick | RN 8          |
| GRSR 20                 | GRSF 20                 | BA M10-35<br>M10 x 35 | BA 6-20<br>Ø6 x 20          | BA 96-8<br>M8 x 8 | GBP 20<br>5mm thick | GSP 20<br>2mm thick | RN 10         |
| GRSR 25                 | GRSF 25                 | BA M12-35<br>M12 x 35 | BA 6-20<br>Ø6 x 20          | BA 96-8<br>M8 x 8 | GBP 25<br>5mm thick | GSP 25<br>2mm thick | RN 12         |
| GRSR 32                 | GRSF 32                 | BA M12-35<br>M12 x 35 | BA 6-20<br>Ø6 x 20          | BA 96-8<br>M8 x 8 | GBP 32<br>5mm thick | GSP 32<br>2mm thick | RN 12         |

|         |         |                       |                    |                   |                     |                     |       |
|---------|---------|-----------------------|--------------------|-------------------|---------------------|---------------------|-------|
| PRSR 10 | PRSF 10 | BA M8-35<br>M8 x 35   | BA 6-20<br>Ø6 x 20 | BA 96-8<br>M8 x 8 | GBP 10<br>5mm thick | GSP 10<br>2mm thick | RN 8  |
| PRSR 13 | PRSF 13 | BA M8-35<br>M8 x 35   | BA 6-20<br>Ø6 x 20 | BA 96-8<br>M8 x 8 | GBP 13<br>5mm thick | GSP 13<br>2mm thick | RN 8  |
| PRSR 16 | PRSF 16 | BA M8-35<br>M8 x 35   | BA 6-20<br>Ø6 x 20 | BA 96-8<br>M8 x 8 | GBP 16<br>5mm thick | GSP 16<br>2mm thick | RN 8  |
| PRSR 20 | PRSF 20 | BA M10-35<br>M10 x 35 | BA 6-20<br>Ø6 x 20 | BA 96-8<br>M8 x 8 | GBP 20<br>5mm thick | GSP 20<br>2mm thick | RN 10 |
| PRSR 25 | PRSF 25 | BA M12-35<br>M12 x 35 | BA 6-20<br>Ø6 x 20 | BA 96-8<br>M8 x 8 | GBP 25<br>5mm thick | GSP 25<br>2mm thick | RN 12 |
| PRSR 32 | PRSF 32 | BA M12-35<br>M12 x 35 | BA 6-20<br>Ø6 x 20 | BA 96-8<br>M8 x 8 | GBP 32<br>5mm thick | GSP 32<br>2mm thick | RN 12 |

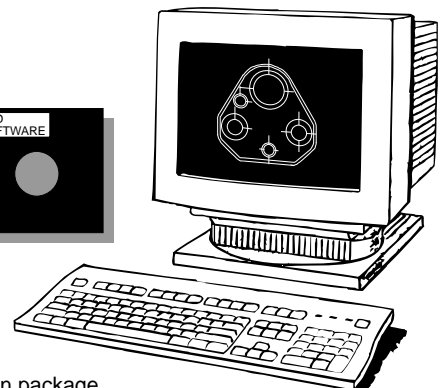
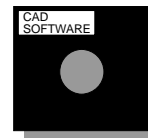
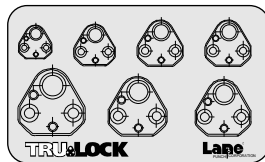
**BA 64 Economy**  
Full scale design template

**BA 65 Economy**  
1/2 and 1/4 scale design template

**BA 66 Rap-i-Die**  
Multi-hole design template

**BA 68A Tru-Lock**  
Full scale design template

**BA 69A Tru-Lock**  
1/2 and 1/4 scale design template



**Lane CAD**  
Electronic design package  
Contact our sales or engineering staff.